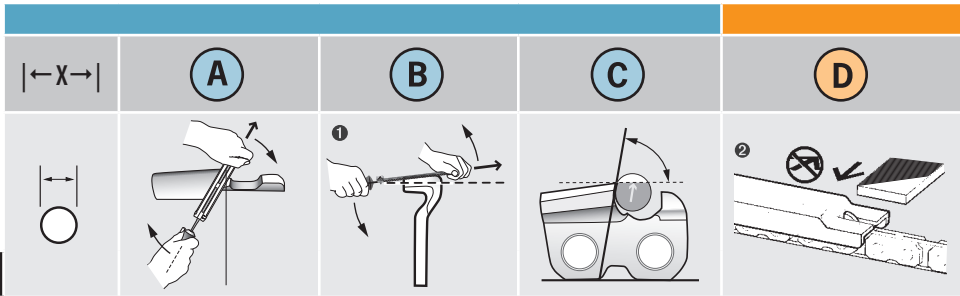


FILING ANGLES



		←X→	A	B	C	D
1/4"						
	25AP	5/32"	30°	10°	85°	.025"
3/8"						
	90SG	4.5mm	30°	0°	75°	.025"
	91P, 91PX, 91VG	5/32"	30°	0°	80°	.025"
	90S	4.5mm	30°	0°	75°	.025"
	91VX, 91VXL, M91VX	5/32"	30°	0°	80°	.025"
325						
	33, 34, 35SL	4.5mm	25°	10°	60°	.025"
	95VPX	3/16"	30°	10°	80°	.025"
	20, 21, 22BPX	3/16"	30°	10°	85°	.025"
	20, 21, 22LPX, M20, M21, M22LPX	3/16"	25°	10°	80°	.025"
	95R	3/16"	10°	10°	75°	.025"
3/8"						
	72, 73, 75V	7/32"	25°	10°	60°	.025"
	72, 75CJ, CK, CL, CJX, CKX, CLX	⊗	45°	45°	90°	.025"
	72AP, 72, 73, 75DP	7/32"	35°	10°	85°	.025"
	72, 73, 75JGX, JPX, LGX, LPX	7/32"	25°	10°	60°	.025"
	M72, M73, M75LPX					
	72, 73, 75RD	7/32"	10°	10°	75°	.025"
404						
	27X, 27AX	7/32"	30°	10°	65°	.030"
	27R, RA	7/32"	10°	10°	75°	.030"
	58CJ, CL, 59CJ, CK, CL	⊗	45°	45°	85°	.025"
	58, 59J, L	7/32"	25°	10°	60°	.025"
	68LX, JX	7/32"	25°	10°	60°	.030"
	68CJ, CL	⊗	45°	45°	-	.030"
404						
	16H, 18H, 18HX, 18HJX	7/32"	35°	10°	80°	.050"
3/4"						
	11BC	5/16"	35°	0°	85°	.060"
	11H	5/16"	30°	0°	80°	.070" ④

- ① When using an OREGON® file guide, ALWAYS hold it level, 0°, flat on the Top Plate
- ② OREGON® Depth Gauge File (flat file) P/N 12211 must be purchased separately for use with OREGON® Depth Gauge Tools.
- ③ Square Ground Filing: A 15° cutting edge is the result when the file is held at 45° top plate angle and 45° down angle.
- ④ Out of box the depth gauges are set to .060" for cutting in frozen, hardwood conditions.
For most cutting conditions, the recommended setting is .070"